

Upgrade Process to Apollo-FM after Version 3.1.3.

Update Apollo-FM to New Release

You are advised to run this procedure from the Apollo-FM Server The person updating the system will be able to swap CD's if required

Enter the Drive Letter that Contains the Upgrade CD (e.g. D)

Enter the Account Name that Apollo-FM runs in. (if Blank)

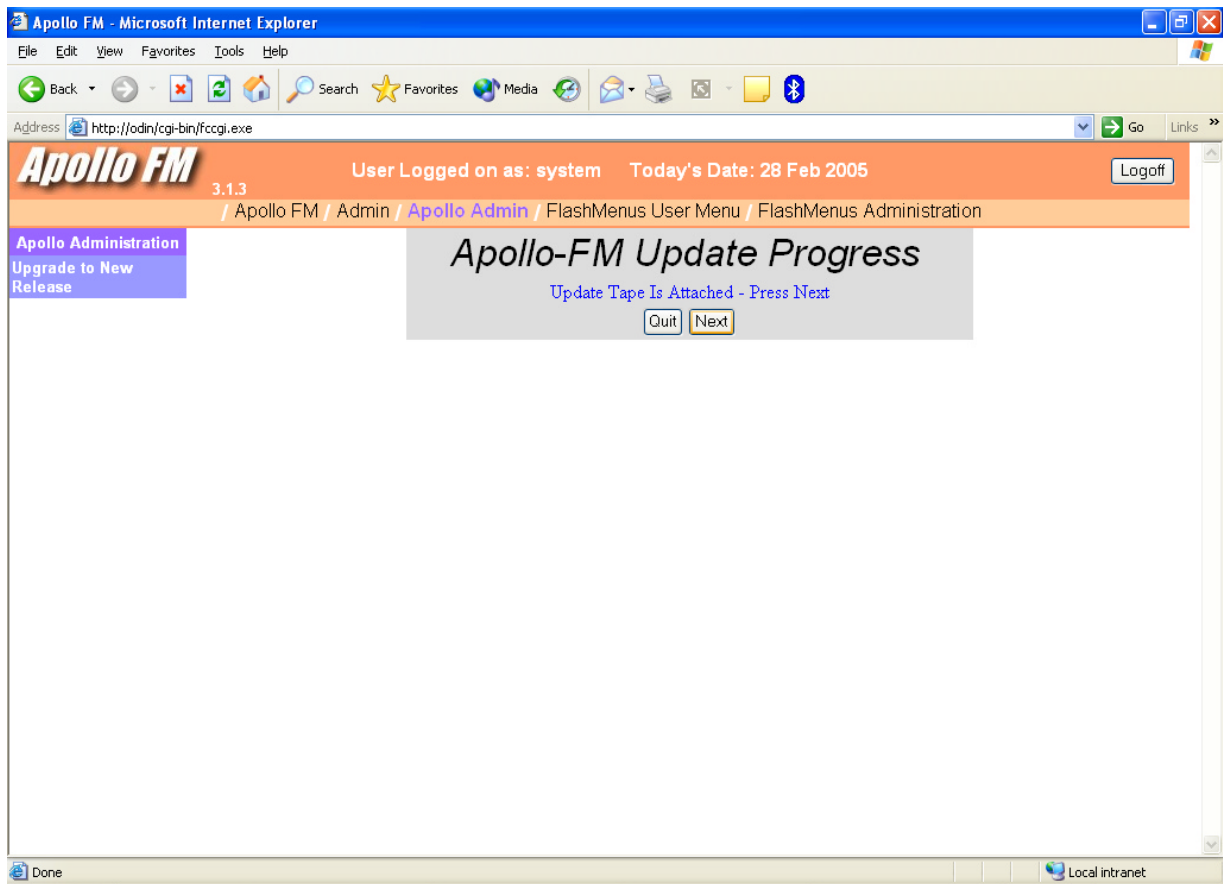
Data account for the above account

Does Apollo run on multiple Data Accounts?

The System menu has been updated to contain a new menu called APOLLO ADMIN. This contains the Parameters that were used in WIMS.

All the user has to do is

follow the instructions on screen. The user must perform this from the server. Making sure every body is logged off, they enter the upgrade CD supplied by the HFC, usually from Premier Software Ltd., into the database server. Next they enter the drive letter in the box provided on the screen, for the CD drive on the server. If you have a D drive partitioned on your disk, then the CD drive will probably be E. The system will have loaded the account name that your Apollo-FM runs in and the data account that holds your database. If you have more than one account, for Apollo-FM then you have to log into each one and run this routine, you also have to choose YES to the Multiple data accounts question. Once you have done this press the Upgrade button. Flashconnect has to be stopped and started again between each account being upgraded. This is covered on page 5.



The user will have several screens like the one above showing the progress of the upgrade. In most cases the user just presses the Next button. If however the message in the centre reports a failure, then the user must press Quit and contact support with the failure message. Some progress screens will take longer to respond than others. One particular screen will warn the user of this so be patient. The whole process should not take longer than half an hour. At the end the progress screen will report a successful upgrade, and when the user presses the next button they will be logged off.